

TITLE BAGGAGE COMPARTMENT INSTL. (MOD)					EO SHEET NO. 1 OF 1		EO NO. 340261-A	
STOP ORDER	MODEL	EFFECTIVE	ENGRG PROJECT NO.	NON PRODUCTION REL			PRODUCTION RELEASE	
STOP RELEASE	A2-A M10	B290 & ON 690001 & ON	10008	DRAFTSMAN		DRAFTSMAN	G.R. HERBST	9-30-68
REVISION			ENGRG JOB NO.	0000	DESIGNER		DESIGNER	<i>C. J. ...</i>
DWG CHG-(INC)	✓		PROGRAM	CHECKER		GP. ENGR	<i>C. J. ...</i>	9-30-68
NEW DRAWING (EO)	EO INC BY		M10	GP. ENGR		DEV. ENGR	<i>C. J. ...</i>	9-30-68
USE AS NOTED	FAA MINOR	✓		DESIGN APPROVAL		CHECKER	G. F. ...	10-2-68
	FAA MAJOR					STRESS	G. ...	10-3-68
						COMPANY APPROVAL	<i>M. J. ...</i>	10-4-68

INC EO's 6200, 6237 & 6253.

1. DELETED 415-52226 FAIRLEAD FROM F/D, ZONE 8/B, & L/M.
 (THIS FAIRLEAD IS REPLACED BY 720069 (52469) FAIRLEAD & IS INSTALLED ON DWG 720055)

DISP: RECORD CHG.

2. CREATED -35 CLIP FOR UPHOLSTERY PURPOSES & ADDED 2 EA TO -1 & -501 INSTL. (REF ZONE 9/C)

DISP: EXISTING ACFT ACCEPTABLE W/O REWORK.

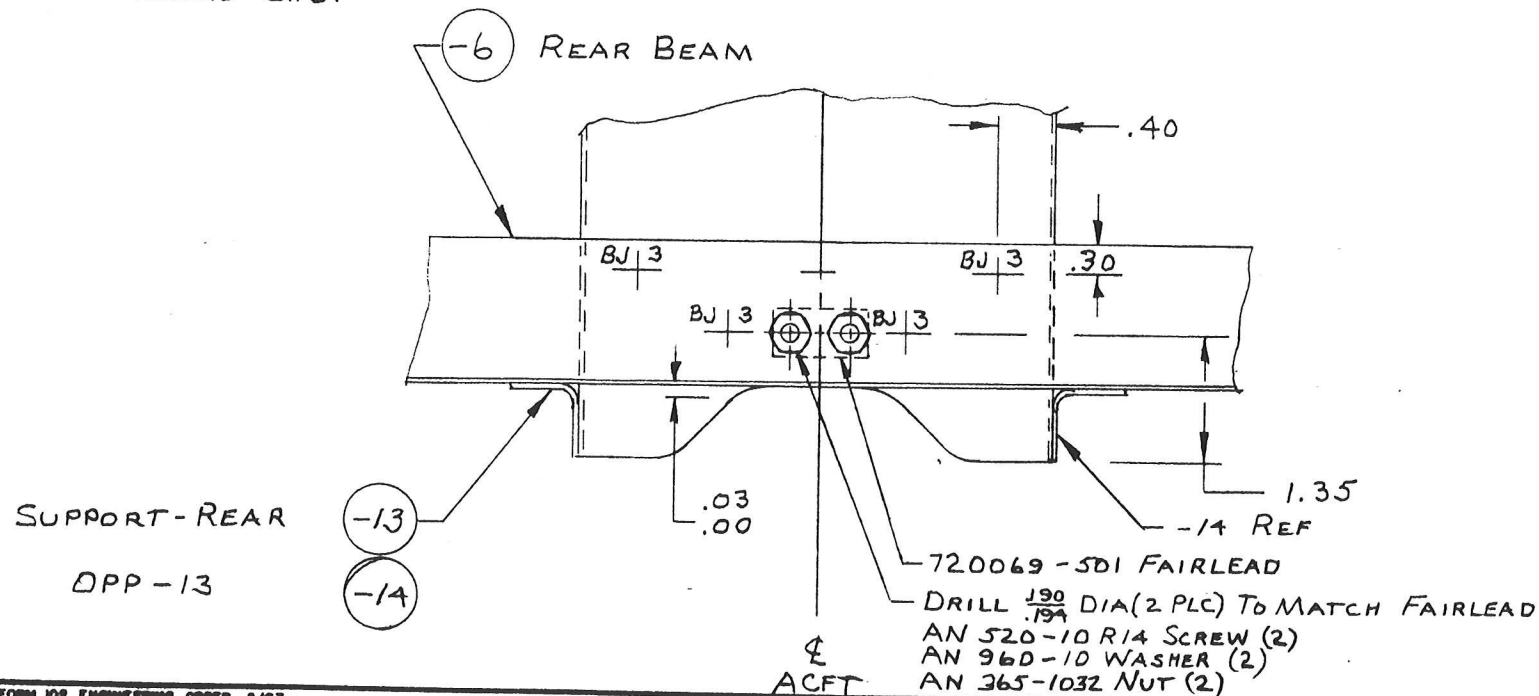
TITLE BAGGAGE COMPARTMENT INSTL (MOD)				EO SHEET NO. 1 OF 1		EO NO. 340261-B	
STOP ORDER	MODEL	EFFECTIVE	ENGRG PROJECT NO.	NON PRODUCTION REL		PRODUCTION RELEASE	
STOP RELEASE	M10	690001 & ON	10008	DRAFTSMAN		DRAFTSMAN	G.R. HERBST 11-4-68
REVISION	✓		ENGRG JOB NO.	DESIGNER		DESIGNER	Coverney 11-5-68
DWG CHG-(INC)			0000	CHECKER		SR ENGR	G. Price 11-7-68
NEW DRAWING (EO)	EO INC BY		PROGRAM	SR ENGR		DEV ENGR	Coverney 11-5-68
USE AS NOTED	FAA MINOR	✓	M10	DESIGN APPROVAL		CHECKER	G. Price 11-7-68
	FAA MAJOR					STRESS	y. Rosenbaum 11-7-68
						COMPANY APPROVAL	RWT for KSA 11-8-68

1. ADD 720069-501 FAIRLEAD TO F/D AS SHOWN BELOW (ZONE 8/B) AND TO L/M. ALSO ADD ATTACHING HARDWARE: AN 520-10 R14 SCREW (2), AN 960-10 WASHER (2), AN 365-1032 NUT (2) TO F/D & L/M. ALSO %O HOLE SIZE AS SHOWN BELOW.

DISP: ACFT M10 690001 IS ACCEPTABLE W/O REWORK.

2. DELETE REFERENCE TO -501 INSTL - ITEM 2, EO "A" & DELETE -501 IN N/A BLOCK. (-501 INSTL DOES NOT EXIST) ADD N/A 110037 FOR -1; 1 REQD PER ACFT, 1 REQD PER N/A.

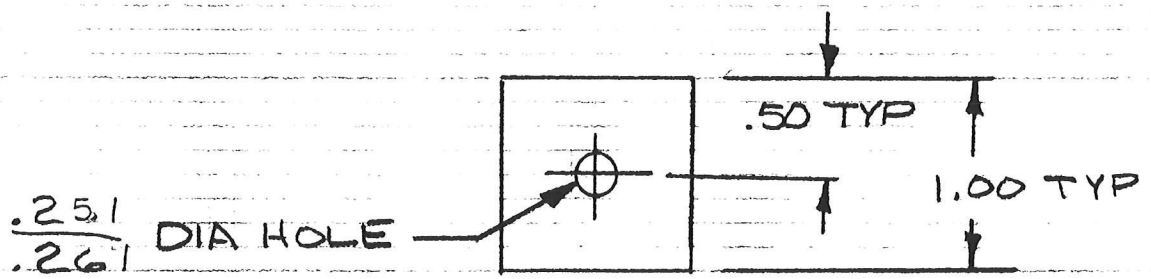
DISP: RECORD CHG.



TITLE BAGGAGE COMPARTMENT INSTL (MOD)				EO SHEET NO. 1 OF 1	EO NO. 340261-C
STOP ORDER	MODEL	EFFECTIVE	ENGRG PROJECT NO.	NON PRODUCTION REL	
STOP RELEASE	M10	NONE	20226	PRODUCTION RELEASE	
REVISION	<input checked="" type="checkbox"/>		ENGRG JOB NO.	DRAFTSMAN	Tony Cronshaw 3/24/69
DWG CHG-(INC)			PROGRAM	DESIGNER	
NEW DRAWING (EO)	EO INC BY			CHECKER	
USE AS NOTED	FAA MINOR	<input checked="" type="checkbox"/>	FAA MAJOR	SP ENGR	
				DESIGN APPROVAL	
				DEV. ENGR	Carney 3-25-69
				CHECKER	W. H. MEYER 3/25/69
				STRESS	g. Downum 3/25/69
				COMPANY APPROVAL	Rec 3/25/69

1 CHG ANGLE OF -25 (-26 OPP) ANCHOR FROM "9°" TO "6° ± 1°"

DISP: EXISTING A/C AND -25-26 ANCHORS ACCEPTABLE WHEN USED WITH SHIMS (SEE BELOW) USE AS REQUIRED, NOT EXCEEDING 3 SHIMS PER PART.

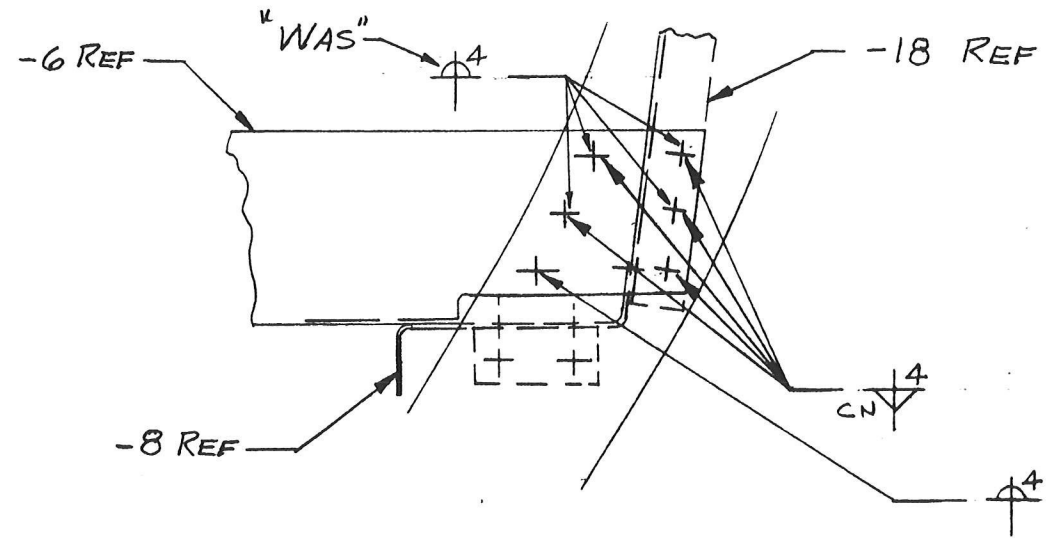


MAKE FROM 2024-T3 AL ".040"

TITLE BAGGAGE COMPARTMENT INSTL (MOD)				EO SHEET NO 1 OF 1		EO NO 340261-D		
REVISION	<input checked="" type="checkbox"/>	ENGRG PROJECT NO 20001	MODEL M10	EFFECTIVE NONE	MODEL	EFFECTIVE	DRAFTSMAN ERWIN	6-23-69
DWG CHG-(INC)		ENGR JOB NO —					CHECKER GP/WEHMEYER	6-27-69
USE AS NOTED		DESIGN SUMMARY NO —					PROJ ENG Carney	6-30-69
EO INC BY		OTHER —					PROD ENGR W.T. Haskelee Jr.	6/30/69
							F A MAJOR	
							F A MINOR V. Roelmann	6/30/69
							COMPANY APPROVAL MR Furman	6-30-69

1. CHG C/O OF ∇^4 TO ∇^4 (4) PLACES AT INTERSECTION OF
 -6 BEAM & -18 ANGLE & -26 ANCHOR, VIEW D-D (11/A)
 LEFT & RIGHT SIDE

DISP: EXISTING A/C ARE ACCEPTABLE W/O REWORK



TITLE BAGGAGE COMPARTMENT INSTL (MOD)				EO SHEET NO I OF I		EO NO 340261 - E	
REVISION	✓	ENGRG PROJECT NO	MODEL	EFFECTIVE	MODEL	EFFECTIVE	DRAFTSMAN
DWG CHG - (INC)		10512	M10	NONE			H. WITT
USE AS NOTED		ENGR JOB NO					CHECKER
EO INC BY		DESIGN SUMMARY NO					WEHMAYER
		OTHER					PROJ ENG
							W. J. ...
							WLS
							MAJOR
							MINOR
							COMPANY
							APPROVAL

I. LENGTHEN -27, -28 STRINGER AS SHOWN:

DISP: SCRAP EXISTING PARTS WHEN NEW PARTS BECOME AVAILABLE.
 ASSY & A/C ACCEPTABLE WITHOUT REWORK.

